

Question Number 1 of 35

**Your vehicle has a current warrant of fitness but a rear red stop light is not working.
What should you do?**

Continue to drive the vehicle

Only use the vehicle during daylight hours

Have the fault repaired immediately

Only use the vehicle in a 50 km/h speed zone

Question Number 2 of 35

Which one of the following vehicles can you drive on a car licence?

A moped

A motorbike

A truck with dangerous goods

A bus

Question Number 3 of 35

What is the maximum distance a load may overhang your vehicle behind the rear axle?

4 metres

5 metres

6 metres

7 metres

Question Number 4 of 35

At night, a towed vehicle must:

have a red light at the back

have its hazard lights on.

be sounding its horn

be travelling slower than 50 km/h

Question Number 5 of 35

What is the maximum speed you may drive if you have a 'space saver wheel' fitted?

Normal speed limits apply

60 km/h

80 km/h

90 km/h

Question Number 6 of 35

If you have a front tyre blowout, the vehicle will:

pull to the side with the blowout

pull away from the side with the blowout

sway from side to side

slow down

Question Number 7 of 35

Passengers in your vehicle are 15 years or over. Who is responsible for making sure they wear a safety belt?

The passengers themselves

The parents of the passengers

You as the driver of the vehicle

Other passengers in your vehicle

Question Number 8 of 35

What must be displayed on the back of a trailer being towed at night?

A blue light

A red light

A white flag

A white light

Question Number 9 of 35

If you have a learner licence you can carry passengers if your supervisor is in the back seat.

TRUE

FALSE

Question Number 10 of 35

You may use a right turn bay to overtake a vehicle travelling straight ahead

TRUE

FALSE

Question Number 11 of 35

Does the driver of the blue car have to give way?



Yes

No

Question Number 12 of 35

Does the driver of the blue car have to give way?

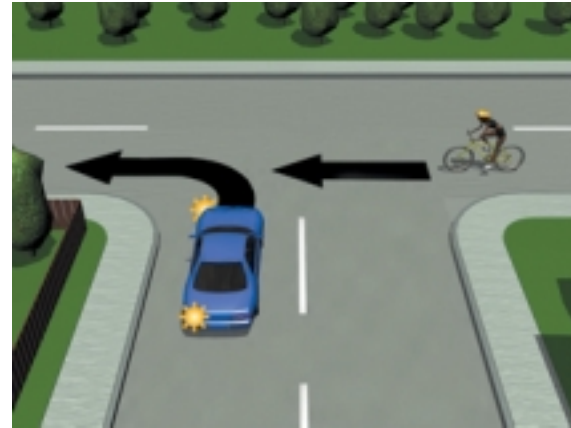


Yes

No

Question Number 13 of 35

You are the driver of the blue car. What must you do?



Speed up to get around in front of the cyclist

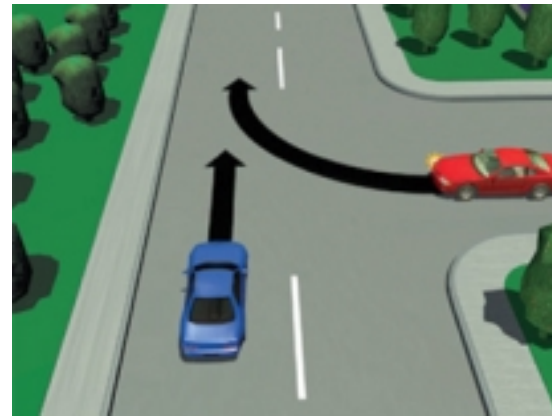
Keep driving as the cyclist has to give way to larger vehicles

Sound the warning device to warn the cyclist

Stop and give way to the cyclist

Question Number 14 of 35

Does the driver of the blue car have to give way?



Yes

No

Question Number 15 of 35

What does this sign mean?



You may park your vehicle within the next 40 metres of the sign

You may park your vehicle for no longer than 40 minutes from 8 am to 6 pm on days other than public holidays

You may not park your vehicle within the next 40 metres of the sign

You may park your vehicle for longer than 40 minutes if someone stays in it

Question Number 16 of 35

What do these road markings mean?



Turning vehicles should enter turning lane at arrows and avoid striped area

Turning vehicles should avoid all road markings and use the left-hand lane

All vehicles can make a U-turn at these road markings

Turning vehicles drive straight over all road markings and wait to turn right.

Question Number 17 of 35

What must you do at an intersection controlled by a stop sign?

Come to a complete stop

Slow down and be prepared to stop.

Stop only if you can do so safely

Continue driving unless you can see an oncoming vehicle

Question Number 18 of 35

What does this sign mean?



Do not drive slower than 50 km/h

Do not drive faster than 50 km/h unless the road is clear

Do not drive faster than 50 km/h

There is a rest area 50 metres ahead

Question Number 19 of 35

What must you do when you see 2 red lights flashing outside a fire station?

Slow down and drive on carefully if the way is clear

Slow down and stop if any other vehicle is coming

Slow down to 20 km/h

Stop until the lights stop flashing

Question Number 20 of 35

What does this sign mean?



There is loose gravel on the road that could break your windscreen

There is broken glass on the road

Road works ahead

Look out for slips

Question Number 21 of 35

Does the driver of the blue car have to give way?



Yes

No

Question Number 22 of 35

If you have a restricted licence you can carry a passenger if they are your spouse.

TRUE

FALSE

Question Number 23 of 35

If you are under 20 the legal alcohol limit is 30 mg/100 ml blood. What does this mean?

You are not permitted to drink any alcohol before driving

You may drink two standard glasses of alcohol

You may drink one standard glass of alcohol

There are no restrictions on limits of alcohol but you are not able to drive if intoxicated

Question Number 24 of 35

How close can you park your vehicle to the approach side of a pedestrian crossing where no broken yellow lines have been marked?

6 metres

5 metres

4 metres

3 metres

Question Number 25 of 35

A vehicle should not send out visible smoke for more than how many seconds?

3 seconds

5 seconds

8 seconds

10 seconds

Question Number 26 of 35

What rule should you use to judge a safe following distance in wet or frosty conditions if driving a car?

The give way rule

The 2-second rule

The 6-second rule

The 4-second rule

Question Number 27 of 35

When driving at night, which vehicle lights should you turn on?

Headlights

Park lights

Interior lights

Hazard lights

Question Number 28 of 35

Which of your vehicles lights do you have on if you are driving in fog?

Park lights on

Headlights on dip

Headlights on high beam

Hazard lights on

Question Number 29 of 35

Before making a lane change to your left, you must signal for at least 3 seconds. What else must you do?

Use your vehicle brake lights to warn other road users

Use your vehicle hazard lights to warn other road users

Check your blind spot before moving left

Ensure that there are no oncoming vehicles

Question Number 30 of 35

How can small amounts of alcohol affect your driving?

You can judge your speed more easily

Your driving improves

It will alter your senses

Your driving reactions will be quicker

Question Number 31 of 35

When passing a horse and rider, what should you do?

Warn the rider by sounding the horn on your vehicle

Slow down and give them as much room as you can

Speed up

Warn the rider by turning your vehicle headlights on

Question Number 32 of 35

You are driving past a line of parked cars. You notice a ball bouncing out into the road ahead. What should you do?

Keep driving at the same speed

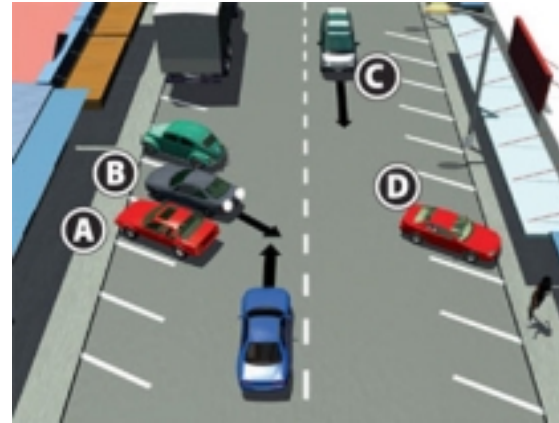
Keep driving at the same speed and flash the vehicle's headlights

Slow down and be prepared to stop for children

Slow down and move to the right-hand side of the road

Question Number 20 of 35

You are the driver of the blue car. Of the 4 hazards marked, which one is most likely to require you to take urgent action?



A

B

C

D

Question Number 34 of 35

When following a vehicle on a dusty metal (gravel) road, you should:

keep close to the other vehicles

drive down the centre of the road

adjust your speed to suit the conditions

pass the vehicle in front of you

Question Number 35 of 35

You must NOT open the door of your motor vehicle when:

you are parked within 10 metres of a bus stop

you are likely to scratch the paint of your vehicle

the car radio in your vehicle is playing loud music

you are likely to hurt any person