

Question Number 1 of 35

If you have a learner licence you can carry passengers if your supervisor is in the back seat.

TRUE

FALSE

Question Number 2 of 35

Before any modification is carried out on your vehicle, you should:

remove the registration plates from your vehicle.

check with an authorised vehicle inspection centre.

check that your warrant of fitness is current to within 1 month.

record the modification on your vehicle ownership papers.

Question Number 3 of 35

When you have a learner licence you must always drive with a supervisor. A supervisor is a person who has held a current and valid licence for a year.

TRUE

FALSE

Question Number 4 of 35

The warrant of fitness label for your car should be displayed at the:

top center of the windscreen

left of the windscreen

top right corner of the windscreen

bottom center of the windscreen

Question Number 5 of 35

If you have a front tyre blowout, the vehicle will:

pull to the side with the blowout

pull away from the side with the blowout

sway from side to side

slow down

Question Number 6 of 35

If you have had a flat tyre and have fitted a 'space saver wheel' what must you do?

Drive normally

Drive at 40 km/h until the flat tyre has been repaired

Drive directly to a place where the flat tyre can be repaired and replaced

Lower the pressure in the other tyres

Question Number 7 of 35

The bonnet of your vehicle lifts up while you are driving and you cannot see. What should you do?

Turn your vehicle headlights on and look out of the side window

Brake smoothly and move over to the left side of the road.

Steer your vehicle straight ahead and stop as quickly as you can

Speed up and move to the left side of the road

Question Number 8 of 35

What is the maximum distance a load may overhang your vehicle behind the rear axle?

4 metres

5 metres

6 metres

7 metres

Question Number 9 of 35

Who is responsible for making a child under 14 years use a safety belt or a safety seat in a vehicle?

The child's parents

The driver of the vehicle

The owner of the vehicle

The child

Question Number 10 of 35

If your car is more than 6 years old, you must renew its warrant of fitness every:

3 months

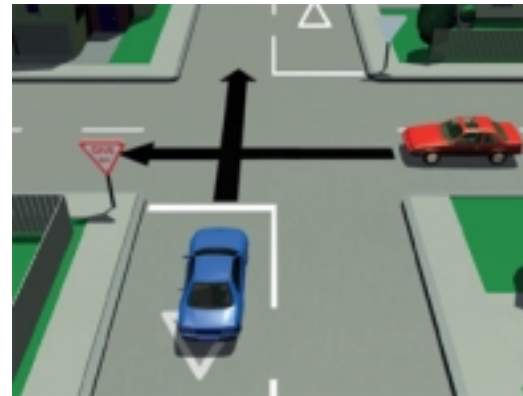
6 months

9 months

12 months

Question Number 11 of 35

Does the driver of the blue car have to give way?



Yes

No

Question Number 12 of 35

Does the driver of the blue car have to give way?

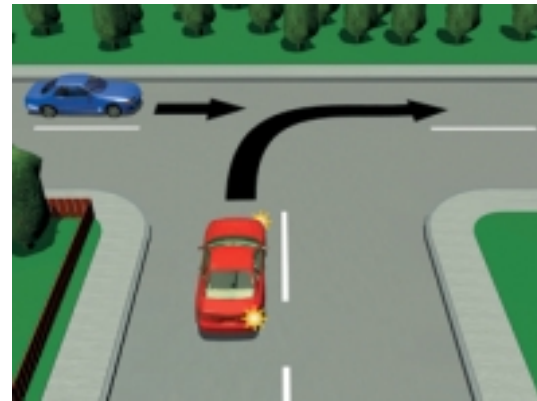


Yes

No

Question Number 13 of 35

Does the driver of the blue car have to give way?



Yes

No

Question Number 14 of 35

Does the driver of the blue car have to give way?



Yes

No

Question Number 15 of 35

Does the driver of the blue car have to give way?



Yes

No

Question Number 16 of 35

What does this sign mean?



5 hours

Fire hydrant

Fire hazzard

Fire hose

Question Number 17 of 35

What does this sign mean?



There has been a crash – slow down to 20 km/h when passing this sign until you have passed the crash

There have been crashes here in the past – slow down

There has been a crash – but the road is clear now

This is an accident black spot.

Question Number 18 of 35

What does this sign mean?



Do not drive slower than 70 km/h

Do not drive faster than 70 km/h

A rest area is 70 metres ahead

Do not stop for the next 70 metres

Question Number 19 of 35

You may use a right turn bay to overtake a vehicle travelling straight ahead

TRUE

FALSE

Question Number 20 of 35

What does this sign mean?



Cycle lane

Keep left

Greasy surface

Left-hand lane closed

Question Number 21 of 35

On a Transit Lane sign, what does T2 mean?

Vehicles that use the lane must have at least two people.

Vehicles that use the lane must have two passengers

Only two vehicles are permitted on the transit lane at any time

There are two transit lanes ahead

Question Number 22 of 35

What must you do when you see blue and red flashing lights behind you?

Speed up to get out of the way

Slow down and drive on carefully

Slow down and stop

Drive on as usual

Question Number 23 of 35

What is the speed limit for vehicles passing a school bus that has stopped to let children on or off?

20 km/h

30 km/h

40 km/h

50 km/h

Question Number 24 of 35

If anybody is hurt in a crash, the driver must tell a police officer as soon as possible but within:

24 hours

36 hours

48 hours

60 hours

Question Number 25 of 35

You can stop or park your vehicle over a fire hydrant if someone stays with the vehicle who can move it

TRUE

FALSE

Question Number 26 of 35

Who may legally require you to give a blood sample?

A police officer, an ambulance officer, other crash party

A medical doctor, other crash party, a police officer

A police officer, a medical doctor or an approved person

An ambulance driver, an approved person or a medical doctor

Question Number 27 of 35

What is the closest distance your vehicle may be parked to a vehicle entrance?

0.5 metres

0.75 metres

1.00 metre

1.25 metres

Question Number 28 of 35

You may park your vehicle on a loading zone when:

you are loading or unloading people or goods

there is no other vehicle on it

it is between the hours of 12 am and 6 am

it is between the hours of 6 pm and 6 am

Question Number 29 of 35

When passing a horse and rider, what should you do?

Warn the rider by sounding the horn on your vehicle

Slow down and give them as much room as you can

Speed up

Warn the rider by turning your vehicle headlights on

Question Number 30 of 35

When turning right from a two-laned road into a one-way street that has two lanes, which lane must you turn into?

The right-hand lane

The left-hand lane

The lane that has the least vehicles

The lane that gives you the most direct route

Question Number 31 of 35

What is the safest way to drive up to intersections?

Looking to the right

Travelling at the speed limit

Looking to the left

At such a speed that you can stop if you have to

Question Number 32 of 35

What must you do if you intend to move your vehicle from the right-hand lane to the left-hand lane?

Move to the left as quickly as possible

Speed up and signal as you move to the left

Signal for at least 3 seconds before moving left

Slow down and signal as you move to the left

Question Number 33 of 35

What is the safest way to carry goods inside a vehicle?

On the driver's lap

On the floor by the driver's feet

On the shelf near the rear window

In a secure place

Question Number 34 of 35

If you are driving at night with your vehicle headlights on high beam, when MUST you dip them?

At an intersection

In a one-way street

Approaching a police officer on point duty

In a town or city

Question Number 35 of 35

What should you do if the vehicle behind you wishes to pass?

Move to the centre so that they cannot pass

Speed up so that they will not need to pass

Move as far to the left side of the road as is safe

Slow down and signal right.